



GAT MONTHLY MEMBERSHIP PROGRESS REPORT

Results as of: 5/31/2024

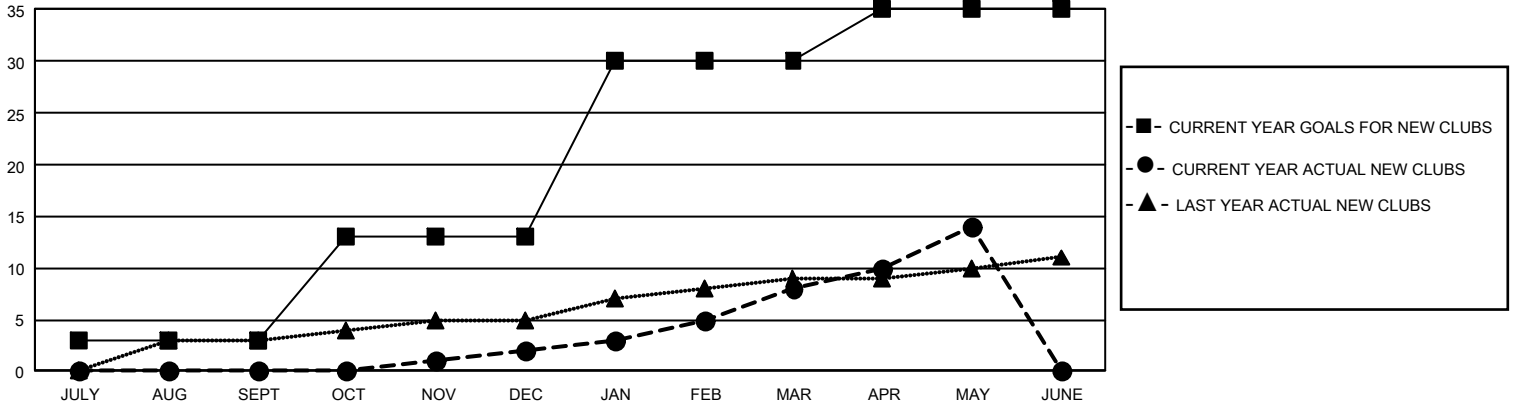
GMT Constitutional Area 1, Group F

REPORT DOES NOT INCLUDE CLUBS IN UNDISTRICTED AREAS.

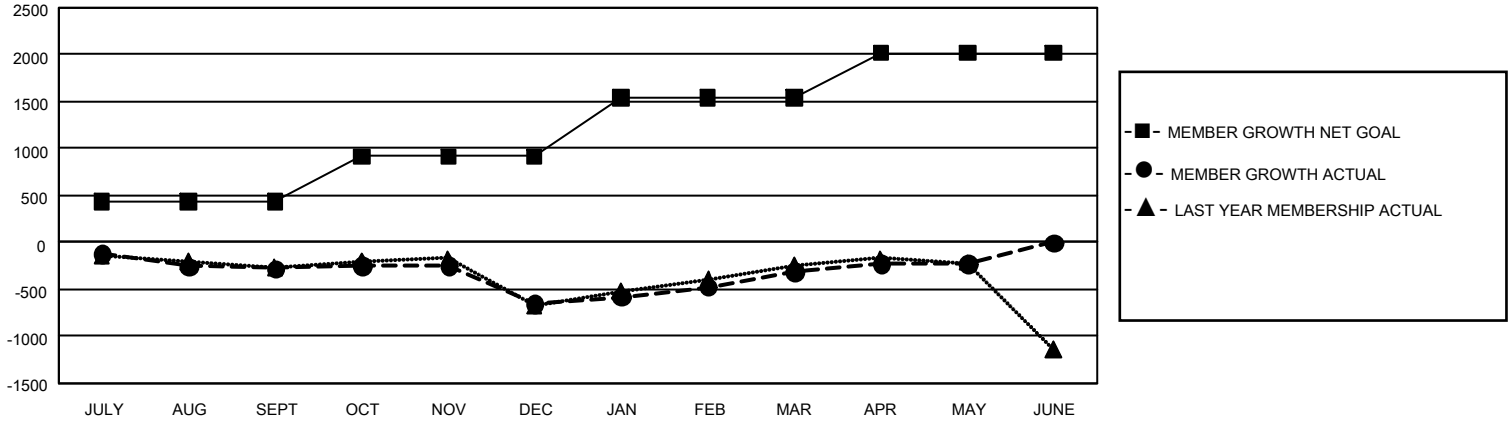
Clubs			
RESULTS FOR 2023-2024			
QUARTER	NEW CLUB GOAL	NEW CLUBS	DROPPED CLUBS
JULY/AUG/SEPT	9	0	7
OCT/NOV/DEC	30	2	16
JAN/FEB/MAR	51	6	5
APR/MAY/JUNE	15	6	2

Members			
RESULTS FOR 2023-2024			
QUARTER	MEMBER GROWTH NET GOAL	MEMBER GROWTH ACTUAL	DROPPED MEMBERS ACTUAL (including transfers)
JULY/AUG/SEPT	431	869	1,036
OCT/NOV/DEC	487	987	1,276
JAN/FEB/MAR	623	1,175	739
APR/MAY/JUNE	475	803	661

GOALS AND ACTUAL NEW CLUBS CUMULATIVE



GOALS AND ACTUAL MEMBERS CUMULATIVE



DROPPED CLUBS: 30	850 CLUBS OF 1,418 ADDED 1 OR MORE NEW MEMBERS	GENDER DISTRIBUTION	
		MALE 23,709 (59.84%) FEMALE 15,891 (40.11%) NON BINARY 1 (0.00%) PREFER NOT TO ANSWER 22 (0.06%)	
DROPPED MEMBERS		CLICK HERE FOR CUMULATIVE MEMBERSHIP DATA	TOTAL FAMILY UNIT MEMBERS 7,571
DECEASED 523 CLUB CANCELLED 229 OTHER 2,943 TOTAL 3,695	FAMILY MEMBERS PAYING HALF DUES 3,941		